

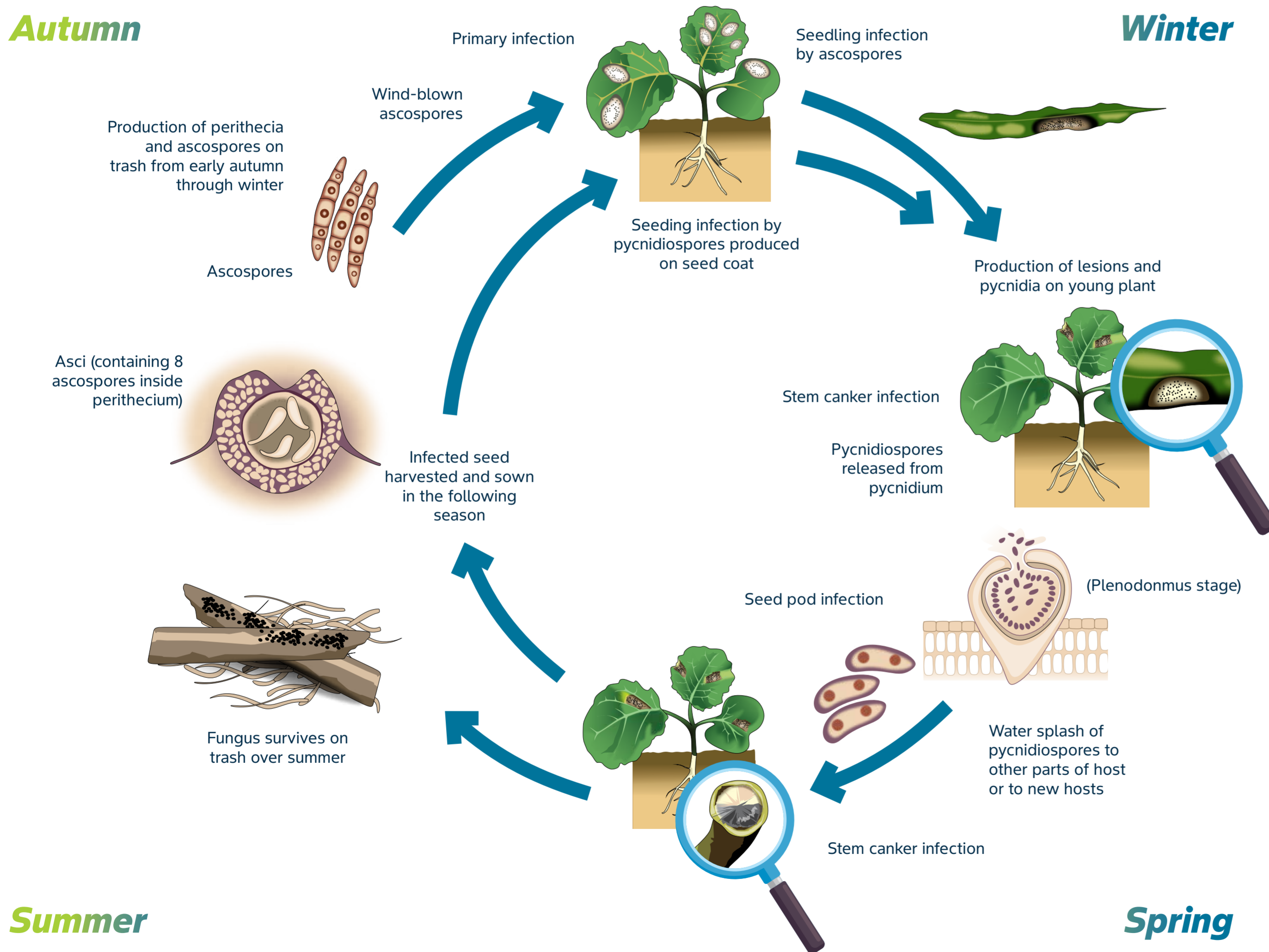
Integrated crop management – Canola



Disease cycle of Blackleg

Autumn

Winter



Summer

Spring

Canola Blackleg (*Leptosphaeria maculans*)

Blackleg infections are primarily initiated by airborne ascospores originating from previous years' infected stubble and crop residues. Higher temperatures and lower moisture conditions during summer and autumn favour the maturity of pseudothecia. Early symptoms on foliage may show up as circular, grey-coloured spots with black specks in the centre.

